

Angle

A

ANGLE, *n.* A figure formed by two rays with a common endpoint.

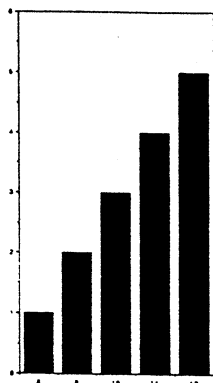
AREA, *n.* The number of square units in a region.

AVERAGE, *adj., n.* The average of a set of numbers is found by adding the numbers in the set, then dividing by the number of numbers in the set.

B

BAR GRAPH, *adj.* A bar graph is a set of parallel bar segments whose lengths represent quantities.

For example:



C

CALIBRATE, *vt.* To check, adjust or standardize systematically the graduation of a quantitative measuring instrument.

CELSIUS, *adj.* The temperature scale in which water freezes at 0° and boils at 100° .

CENTIMETER, *n.* One hundredth part of a meter (0.3937 in = $1/100$ m).

CIRCUMFERENCE, *n.* The distance around a circle.

COMPUTE, *v.* To determine by mathematics, especially by numerical methods.

CONCEPT, *n.* A general idea or understanding especially one derived from specific instances or occurrences.

CONGRUENT, *adj.* Figures that would fit exactly on each other. Two line segments or angles that have equal measures.

Congruent Figures

CONGRUENT FIGURES, *adj.* Two or more plane figures that have the same size and shape.

COORDINATES, *n.* A pair of numbers which locate a point in space.

CUBE, *n.* A solid figure with six square faces or sides, all of which are equal or congruent.

D

DATA, *n.pl.* A collection of facts that can be arranged in chart or graph form.

DECIMAL, *adj., n.* A fractional number in which the denominator is a power of ten, and is not written, but it is understood. Example: $3/10 = 0.3$

DENSITY, *n.* The mass or amount of matter per unit volume.

DIGITS, *n.* The ten symbols used to write numerals.
Example: 0, 1, 2, 3, 4, 5, 6, 7, 8, 9.

DIMENSION, *n.* Refers to those properties called length, width, height.

E

EQUATION, *n.* A statement of equality between two expressions.
Example: $3 + 4 = 7$.

EQUIVALENT, *adj., n.* Having the same value.

ESTIMATION, *n.* Numbers are estimated by rounding them to any place. Rounded numbers are used to estimate results of computations.

EVALUATE, *v.* To find the number that an algebraic expression names.

EXPENSE, *n.* Money allotted for payment.

F

FAHRENHEIT, *adj.* A scale for measuring temperature in which the melting point of ice is 32° above 0 and the boiling point of water is 212° above 0.

FORMULA, *n.* A mathematical statement (especially an equation) of a rule, principal answer or other logical relation.

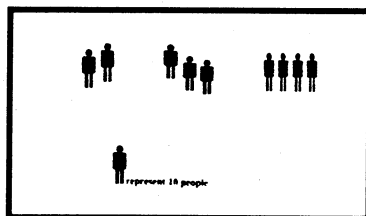
FRACTION, *n.* The ratio of two numbers.

FREQUENCY, *adj., n.* In statistics, the number of times an event occurs.

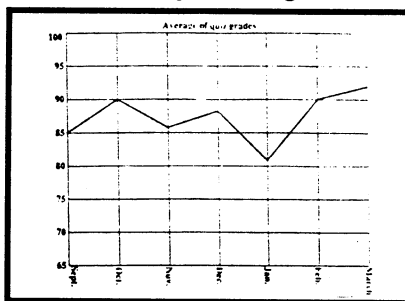
G

GRAPHS, *n*

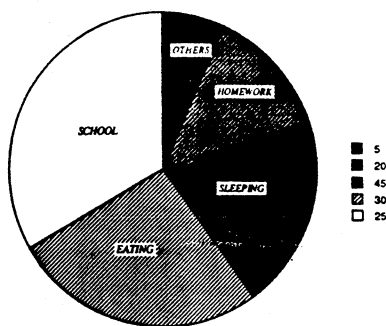
◇ Picture graph, sometimes called a pictograph, uses symbols instead of lines or bars.



◇ Broken-line graph is a set of points connected by line segments. It is usually used to show a trend.

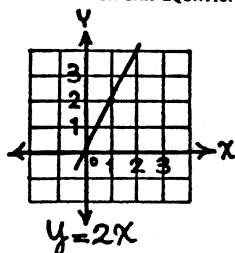


◇ Circle graph, or pie chart shows the relationship of all the parts to the whole.



◇ Linear graph, the graph of an equation is the graph of the solutions to the equation.

GRAPH OF A LINEAR EQUATION



Horizontal

H

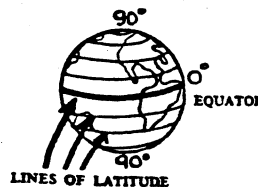
HORIZONTAL, *adj.* Parallel to the earth's surface.

K

KILOMETER, *n.* In the metric system 1000 meters, a measure of distance equal to approximately .62 mile, or 3280 feet.

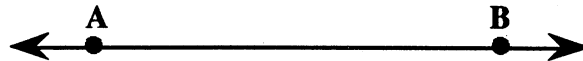
L

LATITUDE, *n.* The number of degrees in an arc of a meridian north or south from the equator. Lines (or parallels) of latitude run parallel to the equator, and with lines of longitude locate precisely any point on the earth's surface. They are numbered in degrees of latitude. 0° is the equator, and 90° north or south is at the poles.



LENGTH, *n.* The measure of line segment or of a set of points on a line.

Example:



LONGITUDE, *n.* The distance east or west of a prime meridian. It is computed in degrees, east or west for 0° to 180° .

M

MEAN, *adj. n.* The quotient obtained when the sum of two or more numbers is divided by the number of addends (see AVERAGE).

MEDIAN, *adj., n.* The middle number in the set when the numbers are arranged from smallest to largest.

METER, *n.* The basic unit of linear measure of the metric system, approximately 37.37 inches.

MODE, *n.* The number that occurs the most times in a set of numbers.

MULTIPLE, *adj., n.* A number that is the product of a given number and another factor.

P

PARALLEL LINES, *adj., n.* Lines in a plane that do not intersect.

PERCENTAGE, *n.* The result found by taking a certain percent of the base, parts per hundred, one would say a percentage.

Example: 10% of 70 is 7. the percentage is 7, the base is 70 and the rate is 10%.

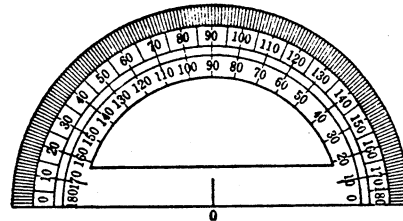
PERIMETER, *n.* The measure of the distance around a flat object or geometric figure.

PREDICTION, *n.* An educated guess about what will happen.

PROBABILITY, *adj., n.* A number from 0 to 1 that tells the chance that a statement about the outcome of a random selection will be true.

PROJECTION (Project), *n.* To transform the points of one figure into those of another by correspondence between points.

PROTRACTOR, *n.* A semicircular plate graduated, usually in degrees, from one extremity of diameter to the other and used to measure angles.



R

RANGE, *n.* In statistics, the absolute difference between the greatest measure and the least measure in any set of data.

RATIO, *adj., n.* A fraction that is a comparison between two numbers.

RATE, *n., v.* Reckoning by comparative values or relations. Relative amount, quantity or degree.

S

SCALE, *n.* A measuring device that is a set of units, usually equally spaced. Thermometers, rulers and balances for weight are all scales.

Segment

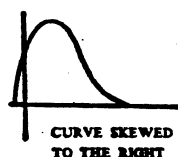
SEGMENT, *n.* A part cut off from any figure by a line or plane.

SIMULTANEOUS, *adj.* Collectively restricting the values of a set of variables (at the same time).

SKEW LINES, *n.* Two lines which do not lie in any one plane.



SKEWNESS, *n.* A curve whose highest point is to the left of the median (negatively skewed) or to the right (positively skewed).



STATISTICS, *n.* Numbers that are used to describe a set of data.

SYMMETRICAL, *adj.* A plane figure that when folded along a line has two parts that match exactly.

T

TABLE, *n.* Arrangement of numerals, letters or signs, usually in rows and columns to show facts or a relationship between them in a compact form. For example, the cost of 1 to 5 gallons of gasoline at 28 cents a gallon is shown in this table.

Number of Gallons	1	2	3	4	5
Cost	.28	.56	.84	1.12	1.40

TETRAHEDRON, *adj.* A polyhedron of four faces. A regular tetrahedron is a pyramid whose base and faces are congruent equilateral triangles.

TOPOLOGY, *n.* One of the most recent branches of mathematics. It deals with place and position, and not quantity or measure.

TRANSFORMATION, *n.* A replacement of the variables in an algebraic expression by their values in terms of another set of variables.

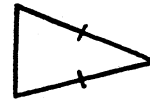
Triangle

TRIANGLE, *n.* The union of line segments AB, BC and AC. A closed plane figure with three sides. Triangles are classified by the relationship of the sides (see equilateral, isosceles, scalene) or by the measure of the angles (angles total 180 degrees).

◇ Equilateral triangle, a triangle with three sides of the same length.



◇ Isosceles triangle, a triangle in which two sides have the same measure.



◇ Scalene, a triangle with no two sides equal.



V

VARIABLE, *n.* A letter or other place-holder in a mathematical expression. It may represent any element in a given set of elements.

W

WEIGHT, *n.* A single number typifying or representing a set of numbers, usually not less than the least nor greater than the greatest.